

Stop Press

Hello and welcome to the February 2024 edition of **DIGI-POST**, your monthly newsletter. There's lots of information in this newsletter so be sure you read each section 😊

We'd like to introduce Tina, our new area commissioner for the Peaks and Dales area.

Hi my name is Tina and I am the new area commissioner for Peaks & Dales. I live in Buxton with my 2 girls Emelye aged 18 and Maisie aged 13 and our mad cocker spaniel Archie! My day job is an assistant manager for a travel agents. I have been a member of Girlguiding since I became a Brownie. I went through Guides, Rangers and was a Young Leader and became a Brownie leader at 18. I have been involved with all 4 sections, at one point all at the same time, but currently one of the team at 6th Buxton Methodist Brownies and 2nd New Mills Guides. I first became a district commissioner in 2008 and have swapped Districts a few times since. I really enjoy taking my units away and would love to lead an international trip in the future, having been to Switzerland as a ranger myself. I look forward to working with the team in Peaks & Dales to provide new opportunities for all sections and meeting new people and making new friends along the way.



2024 Awards nominations open on 22nd February 2024- please see the following link for more information:

<https://www.girlguidingderbyshire.org/derbyshire-awards>

We get questions about the two Girlguiding shops within Derbyshire: Derby and Chesterfield. Check out page 6 for further information about these two shops.

Learning & Development

1st Response

Please see the dates below for the various different 1st response, face to face, training sessions. All of these training sessions can be booked online. Please click [here](#) to book your place.

Note- trainees must complete e-learning on the learning platform prior to course. If spaces show full, please join waitlist.

Sunday 11th February - Chesterfield- Fully Booked

Sunday 10th March - Belper - Fully Booked

Sunday 24th March - **Module 1 only**- Long Eaton- SPACES

Sunday 21st April - Chesterfield- SPACES

Saturday 11th May - Long Eaton- Fully Booked

Sunday 5th October - Inkersall- SPACES

Fi Caldecott, our county treasurer, is more than happy to put on a workshop to support with finances and end of year accounts. She has four sessions at county day, or if you need any specific support please contact her on finance@girlguidingderbyshire.org

Events

Date	Event	Venue	Booking link/more information
Saturday 2 nd March 2024	County Day	Allestree Woodlands School, Derby	To book your place, click here – https://shorturl.at/cIOW6
Saturday 9 th March 2024	Derby International Women's Day festival	The Spot, Derby and The Market Place, Derby	We want Brownie, Guide and Ranger units to join us in the parade for the International Women's Day. The parade starts at 11am until 12pm and will begin at The Spot in Derby and finish at the Market Place. We will also have a stall 11am-4pm if there are any leaders who would like to join us. Please contact Rachel on accgrowth@girlguidingderbyshire.org
13 th -14 th April 2024- save the date	Azores and Tanzania 2025	Trefoil House, Birmingham	More information to follow- Midlands region international selection for girls aged 14-18
6 th +7 th July 2024	Brownies and Guides day trip to Legoland Windsor	Legoland Windsor	Region trip- See Girlguiding Midlands for more information
Saturday 14 th September 2024	Derby Pride	Markeaton Park, Derby	We will have a stall again at Derby Pride event. If you would like to volunteer please contact Rachel on accgrowth@girlguidingderbyshire.org
Saturday 14 th - Sunday 15 th September 2024	Derbyshire County International Selection event	Venue TBC	Save the date- more information to follow
Sunday 22 nd September 2024	Region adult international selection day	TBC	See Girlguiding Midlands website for more details: https://www.girlguiding-midlands.org.uk/whats-on/events/international-selection-for-volunteers/

Commissioner Zone

Commissioner Support:

Commissioner Support session

Virtual session to talk through Our Plan data- useful for all area and district commissioners. Monday 26th February 2024- 7pm. Details will be sent to all ACs and DCs in the county.

We would like to run some more commissioner support sessions. If you have something you are specifically interested in or would like support with please contact Rachel on accgrowth@girlguidingderbyshire.org and we can see what sessions we can deliver for you.

Vacancies

We have the following vacancies to fill- if you are interested in finding out more please contact Angela on cc@girlguidingderbyshire.org

We are still on the search for a peer education coordinator!

Peer educators are aged 14-25 years old and train to be able to deliver sessions to Brownies, Guides and Rangers. You don't have to have been a peer educator to become a peer education coordinator. As part of the role, you will have the opportunity to

- Link leaders and peer educators together to organise sessions.
- Support peer educators to shout about their skills and arrange sessions locally.
- Encourage Rangers to get involved with peer education.
- Coach and mentor peer educators to develop their peer education skills.
- Make sure that your peer educators get (and celebrate) their badges.
- Help set up training events for new peer educators.

Find out more about the peer education coordinator role.

Peer Education sessions: these are currently on hold until we have a peer education coordinator in place and will announce once bookings can be taken again

Girlguiding Derbyshire County Office: Suite 3C, Unicorn Business Park, Wellington Street, Ripley DE5 3EH

Tel: 07368 233324/01773 748151 | Website: www.girlguidingderbyshire.org | Email: office@girlguidingderbyshire.org

Facebook: www.facebook.com/girlguidingderbyshire | Instagram: www.instagram.com/GirlguidingDerbyshire | Twitter: www.twitter.com/GuidingDerbys

Trial invoices

Trial invoices are out now. Please login to GO and check them carefully. Changes need to be made by **7PM Monday 19th February**. Invoices will then be made available from **noon on Tuesday 20th February**. All payments **must** be paid by **Thursday 28th March, noon**.

Accounts

2023 end of year accounts now need to be submitted so that they can be finalised and verified. They must be submitted by 31st March 2024.

If you are requiring support or want to talk anything through, please get in touch with Fi Caldecott, our county treasurer on the following email

finance@girlguidingderbyshire.org

Residentials & Camps

Many units will be starting to plan their 2024 residential and camp adventures, please take a look at the Girlguiding website to ensure you're familiar with the recommended timelines for REN submission: [Going on residentials | Girlguiding](#) Please also note that the approved venue list for all residential properties has been updated. Please speak to your DC if you are planning a residential.

Also please note that Walesby Forest is now no longer on the approved venues list. This is due to them being open to members of the public and being unable to privately book sessions. Any specific Guiding events are permitted at Walesby but it is worth speaking to your DC prior to booking anything here.

Youth United

You may or may not know that Girlguiding Derbyshire have an active role in The Youth United Foundation. Youth United Foundation exists to improve outcomes for young people, regardless of background, by expanding access to uniformed youth groups.

We work with Air Cadets, Army Cadets, Boy's Brigade, Fire Cadets, Girl's Brigade, Jewish Lads and girls Brigade, Scouts, Sea Cadets, St John Ambulance Cadets and Volunteer Police Cadets, to share best practices and learn from each other. It also gives us access to resources from these organisations that we may not have otherwise had.

Annually there is a competitive event between the organisations and this year it is scheduled to be held the first weekend in July. As a county we would like to take two teams of around six members aged 14 to 18. We will also need to provide an activity to run at the event. If you have any older Guides, Rangers or Young Leaders who might be interested, or a leader who would like to be involved in running an activity, please e-mail accprogramme@girlguidingderbyshire.org.

More information will be shared as it is released.

Easy fundraising

Your unit can raise £315 this year just from one person buying their annual one-off purchases. The kind of purchases we all need – car, home, pet insurance, and broadband, for example. **How? By using easyfundraising when they shop online.** Online fundraising platform, easyfundraising provides your unit with **an easy and accessible way to receive free funding** from purchases everyone is already buying anyway. If one person can raise £315, think what a group of people could do. **Take a look at the infographic** to find out more. A new year with new fundraising goals should start with a new way to raise. Sign your unit up to get started: <https://www.easyfundraising.org.uk/girlguiding-midlands/>

Tesco Stronger Starts

This initiative replaces the Tesco Community Grants. The stronger starts scheme is open to all not-for-profit organisations with priority given to projects that support young people. Please see this link to find out more:

<https://tescostrongerstarts.org.uk/>

County day 2024



WHEN?
Saturday 2nd
March 2024
9am- 4pm

WHERE?
Allestree
Woodlands
School,
Blenheim Drive,
Derby
DE22 2LW



ACTIVITIES INCLUDE:

Steel pans workshop

Fitness Pilates

No cooking- cooking

Singing

Craft

Belly Dancing

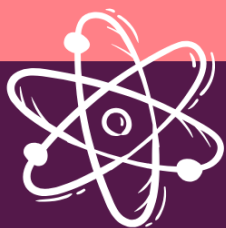
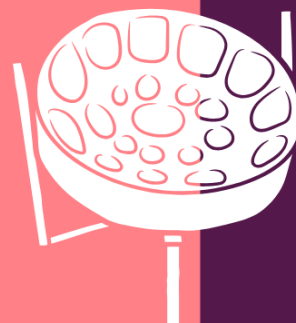
Walking myth busters

Inclusion

Story bags

And much more!

Bookings open soon- see the link below for more
information!



Taster sessions are filling up fast!
county day booking link: <https://shorturl.at/clOW6>
£5 per person

Y1s may attend if accompanied by a unit leader



Flying High

**2024
Gang Show**

**Buy 10,
get the
11th free!**

**Wednesday 14th - Saturday 17th February
at Derby Theatre**

**Wed - Fri 7.15pm, Sat 1.30pm & 6pm
Tickets £17.50 / £15 concessions (under 16 & over 60)**

Box office: 01332 593939 derbytheatre.co.uk

Find us on Facebook or visit our website: flyinghigh.org.uk



Don't forget tickets are still available for this and can be
Purchased on the following link:
<https://derbytheatre.co.uk/event/flying-high-gang-show-2024/>



Derby and Chesterfield Girlguiding Shops



Derby Shop:

Contact email: girlguidingderbydepot@gmail.com

The Derby Guide Shop (corner of Osmaston Road and Hartington Street), car park available behind the shop but only accessible from Normanton Road as Hartington Street is one way.

The shop is open Thursday evenings from 5:30pm to 8:00pm. We are closed for 2 weeks for Easter holidays, Summer Holidays and Christmas holidays.

The shop is open second Saturday of every month 10am - 12pm apart from April and August.

Saturday 2024 dates are 10th Feb, 9th Mar, 11th May, 8th June, 13th July, 14th Sept, 12th Oct, 9th Nov, 14th Dec.

The shop will close after business for Christmas 2024 on Saturday 14th December 2024.

E-mail your order for preparation prior to your collection from the shop or alternatively, telephone orders during opening hours on 01332 372658 for collection from the shop or for posting.

- Have your order posted to you or arrange alternative private collections
- Large or heavy orders will be placed directly through Trading with direct delivery to your home address
- Emergency requests dealt with if in stock with hand delivery where possible
- Various payment options available, at the shop – cash, cheque or card and prepared orders will include an invoice with cheque and BACS payment options
- Nominal postage charge of £1 to £2 depending on order size
- Special badges and awards available as County Badge Secretary is Shop Manager
- We offer a Shop discount on all Young Leader and adult members uniform
- Annual unit voucher scheme with money off the shop items the following year – Ask us for more details
- Mobile shop to area events

We are your local shop, what else could we do to help you? Please ask us!

Chesterfield Shop:

Contact email: chesterfielddepot@gmail.com

The Chesterfield Guide Shop is open, term time only, every Tuesday 3-7pm and every 2nd Saturday of the month 10am-noon.

Saturday 2024 open dates are 10th Feb, 9th March, 13th April, 11th May, 8th June, 13th July, 14th Sept, 12th Oct, 9th Nov and 14th Dec.

Orders can be posted or collected from the shop. Contact them on the details below for any enquiries related to ordering and the shop.

We accept orders via email, chesterfielddepot@gmail.com or telephone, 01246 278336. Telephone orders are only taken when the shop is open.

Address: Address

Chesterfield Guide shop

St. Margaret's Drive

Chesterfield